

SUSTAINABILITY & IMPACT REPORT 2025 | GREEN BREEZE



Reporting Period: 1 January 2025 – 31 December 2025

Location: Tróia / Setúbal, Portugal

Executive Summary

At Green Breeze, we believe that luxury maritime experiences must coexist with the preservation of our oceans. In 2025, we successfully integrated hybrid technology and local sourcing to minimize our environmental footprint. This report, generated via the SME Climate Hub Carbon Calculator, outlines our commitment to transparency and our journey toward Net Zero.

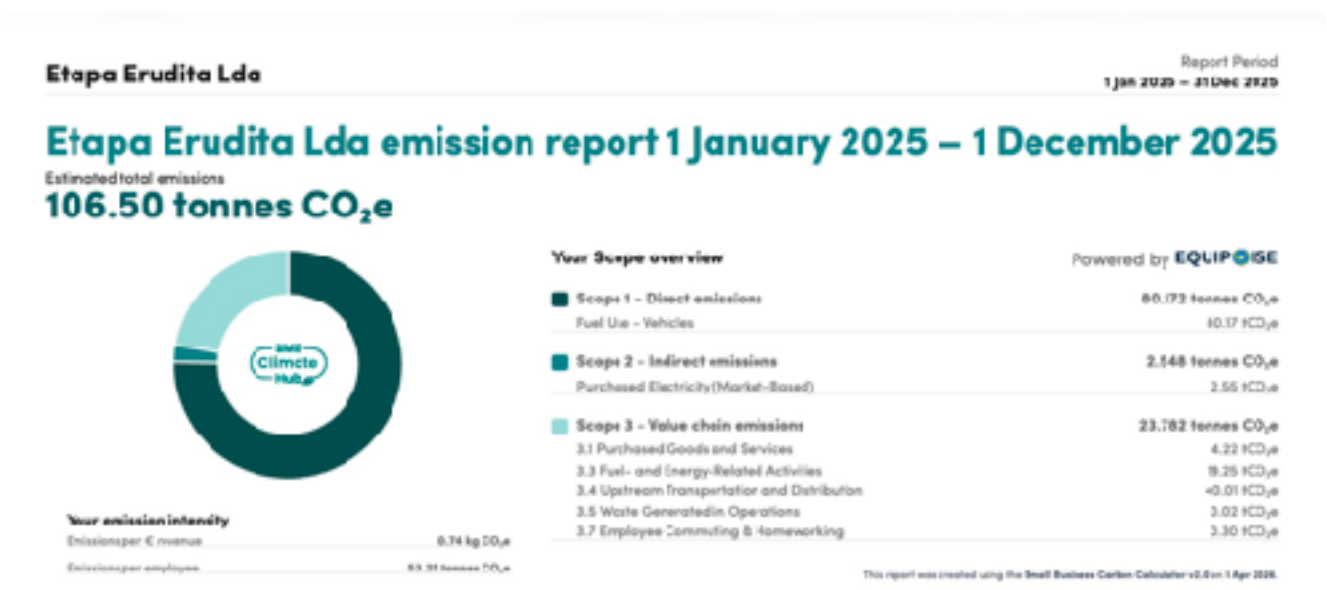
Carbon Footprint Overview

Our total estimated emissions for 2025 were **106.50 tonnes CO₂e**.

Scope 1 (Direct Emissions): 80.17 tonnes CO₂e. Primarily derived from fuel use in our vessels.

Scope 2 (Indirect Emissions): 2.55 tonnes CO₂e. This represents purchased electricity. Notably, 82.9% of our grid electricity in Portugal comes from renewable sources, and our primary vessel, the Greenline 48 Hybrid, utilizes integrated solar panels for "clean" hoteling and navigation.

Scope 3 (Value Chain): 23.78 tonnes CO₂e. This includes our local catering supplies, employee commuting via public catamaran, and waste management.



This report has been calculated with market-based electricity data (removing electricity specified as renewable by energy provider). It should be provided only as a secondary report to a standard report using location-based electricity data.

Key Sustainability Highlights

Hybrid Innovation: By operating the Greenline 48 Hybrid, we utilized approximately 128 hours of 100% electric navigation in 2025, significantly reducing noise pollution and direct emissions in the sensitive Sado Estuary ecosystem.

Solar Autonomy: Our vessel's solar array generated an estimated 2,372 kWh of renewable energy, powering onboard systems and reducing dependence on the marina grid.

Strict Local Sourcing: 100% of our catering (local cheeses, wines, and seafood) is sourced within 5km of our base. This resulted in an exceptionally low "Upstream Transportation" impact of <0.01 tonnes CO₂e.

Sustainable Commuting: Our team prioritizes public maritime transport (catamarans) for logistics, keeping our employee commuting footprint at a low 0.30 tonnes CO₂e.

Waste & Water Management

Water Conservation: We used approximately 3,000 liters of water in 2025, focusing on efficient tank management and minimizing freshwater waste during vessel maintenance.

Circular Economy: We actively recycle glass, metal, and paper from every charter. In 2025, our waste generated in operations was kept to a minimum of 0.02 tonnes CO₂e.

2026 Commitment

Moving forward, Green Breeze pledges to:

- Increase the ratio of electric-to-diesel navigation hours.
- Work toward a single-use plastic-free onboard experience as much as possible.
- Continue supporting the local economy of Setúbal through ethical procurement.

Report created on: 1 April 2026

Methodology: SME Climate Hub Small Business Carbon Calculator